



## Operating Systems

Virtual Memory  
(Chapter 10)

## Memory Management Outline

- Processes (done)
- Memory Management
  - Basic (done)
  - Paging (done)
  - Virtual memory ←

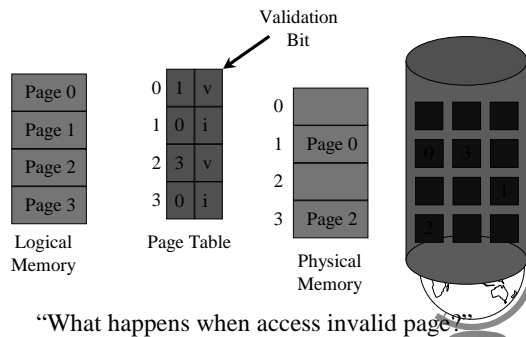


## Motivation

- Logical address space larger than physical memory
  - $2^{32}$  about 4 GB in size
  - “Virtual Memory”
  - on special disk
- Abstraction for programmer
- Performance ok? Examples:
  - Unused libraries
  - Error handling not used
  - Maximum arrays



## Paging Implementation



“What happens when access invalid page?”

## Accessing Invalid Pages

- Page not in memory
  - interrupt OS => *page fault*
- OS looks in table:
  - invalid reference? => *abort*
  - not in memory? => *bring it in*
- Get empty frame (from list)
- Write page from disk into frame
- Reset tables (set valid bit = 1)
- Restart instruction



## Performance of Demand Paging

- Page Fault Rate ( $p$ )
  - $0 \leq p < 1.0$  (no page faults to every ref is a fault)
- Page Fault Overhead
  - = write page in + update + restart
  - Dominated by time to write page in
- Effective Access Time
  - =  $(1-p)$  (memory access) +  $p$  (page fault overhead)



## Performance Example

- Memory access time = 100 nanoseconds
- Page fault overhead = 25 msec
- Page fault rate = 1/1000
- $EAT = (1-p) * 100 + p * (25 \text{ msec})$   
 $= (1-p) * 100 + p * 25,000,000$   
 $= 100 + 24,999,900 * p$   
 $= 100 + 24,999,900 * 1/1000 = 25 \text{ microseconds!}$
- Want less than 10% degradation  
 $110 > 100 + 24,999,900 * p$   
 $10 > 24,999,900 * p$   
 $p < .0000004$  or 1 fault in 2,500,000 accesses!

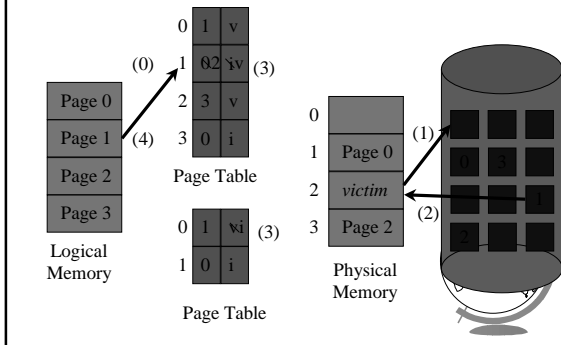


## No Free Frames

- Page fault => What if no free frames?
  - terminate process (out of memory)
  - swap out process (reduces degree of multiprog)
  - replace another page with needed page
  - *Page replacement*
- Page fault with page replacement:
  - if free frame, use it
  - else use algorithm to select *victim* frame
  - write page to disk
  - read in new page
  - change page tables
  - restart process



## Page Replacement



## Page Replacement Algorithms

- Every system has its own
- Want lowest *page fault rate*
- Evaluate by running it on a particular string of memory references (*reference string*) and computing number of page faults
- Example: 1,2,3,4,1,2,5,1,2,3,4,5



## First-In-First-Out (FIFO)

1,2,3,4,1,2,5,1,2,3,4,5

3 Frames / Process

1
2
3



## First-In-First-Out (FIFO)

1,2,3,4,1,2,5,1,2,3,4,5

3 Frames / Process

1	4	5
2	1	3
3	2	4

9 Page Faults

How could we reduce the number of page faults?



### Optimal

vs.

- Replace the page that will not be used for the longest period of time

1,2,3,4,1,2,5,1,2,3,4,5

4 Frames / Process

1
2
3
4

### Optimal

vs.

- Replace the page that will not be used for the longest period of time

1,2,3,4,1,2,5,1,2,3,4,5

4 Frames / Process

1	4
2	
3	
4	5

6 Page Faults

How do we know this?  
Use as *benchmark*

### Least Recently Used

- Replace the page that has not been used for the longest period of time

1,2,3,4,1,2,5,1,2,3,4,5

1
2
3
4

### Least Recently Used

- Replace the page that has not been used for the longest period of time

1,2,3,4,1,2,5,1,2,3,4,5

1	5
2	
3	5 4
4	3

8 Page Faults

### LRU Implementation

- Counter implementation
  - every page has a counter; every time page is referenced, copy clock to counter
  - when a page needs to be changed, compare the counters to determine which to change
- Stack implementation
  - keep a stack of page numbers
  - page referenced: move to top
  - no search needed for replacement
- (Can we do this in software?)

### LRU Approximations

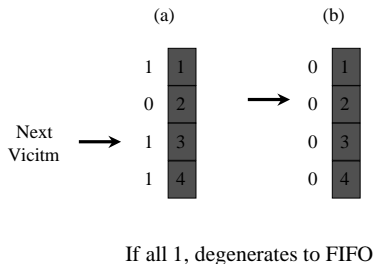
- LRU good, but hardware support expensive
- Some hardware support by *reference bit*
  - with each page, initially = 0
  - when page is referenced, set = 1
  - replace the one which is 0 (no order)
- Enhance by having 8 bits and shifting
  - approximate LRU*

## Second-Chance

- FIFO replacement, but ...
  - Get first in FIFO
  - Look at reference bit
    - + bit == 0 then replace
    - + bit == 1 then set bit = 0, get next in FIFO
- If page referenced enough, never replaced
- Implement with circular queue



## Second-Chance



## Enhanced Second-Chance

- 2-bits, *reference bit* and *modify bit*
- (0,0) neither recently used nor modified
  - best page to replace
- (0,1) not recently used but modified
  - needs write-out (“dirty” page)
- (1,0) recently used but “clean”
  - probably used again soon
- (1,1) recently used and modified
  - used soon, needs write-out
- Circular queue in each class -- (Macintosh)



## Page Buffering

- Pool of frames
  - start new process immediately, before writing old
    - + write out when system idle
  - list of modified pages
    - + write out when system idle
  - pool of free frames, remember content
    - + page fault => check pool

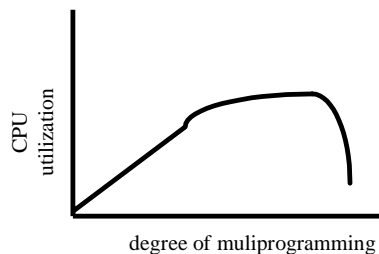


## Thrashing

- If a process does not have “enough” pages, the page-fault rate is very high
  - low CPU utilization
  - OS thinks it needs increased multiprogramming
  - adds another process to system
- *Thrashing* is when a process is busy swapping pages in and out



## Thrashing



## Cause of Thrashing

- Why does paging work?
  - Locality model
    - + process migrates from one locality to another
    - + localities may overlap
- Why does thrashing occur?
  - sum of localities > total memory size
- How do we fix thrashing?
  - Working Set Model
  - Page Fault Frequency



## Working-Set Model

- Working set window  $W$  = a fixed number of page references
  - total number of pages references in time  $T$
- $Total$  = sum of size of  $W$ 's
- $m$  = number of frames

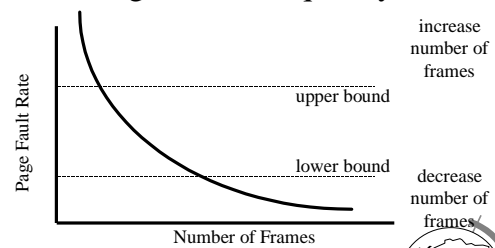


## Working Set Example

- $T = 5$
- 1 2 3 2 3 1 2 4 3 4 7 4 3 3 4 1 1 2 2 2 1
  - $W = \{1, 2, 3\}$      $W = \{3, 4, 7\}$      $W = \{1, 2\}$
  - if  $T$  too small, will not encompass locality
  - if  $T$  too large, will encompass several localities
  - if  $T \Rightarrow$  infinity, will encompass entire program
- if  $Total > m \Rightarrow$  thrashing, so suspend a process
- Modify LRU appx to include Working Set



## Page Fault Frequency



- Establish “acceptable” page-fault rate
  - If rate too low, process loses frame
  - If rate too high, process gains frame



## Outline

- Demand Paging Intro (done)
- Page Replacement Algorithms (done)
- Thrashing (done)
- Misc Paging
- WinNT
- Linux
- “Application Performance Studies”



## Prepaging

- Pure demand paging has many page faults initially
  - use working set
  - does cost of prepaging unused frames outweigh cost of page-faulting?



## Page Size

- Old - Page size fixed, New -choose page size
- How do we pick the right page size? Tradeoffs:
  - Fragmentation
  - Table size
  - Minimize I/O
    - + transfer small (.1ms), latency + seek time large (10ms)
  - Locality
    - + small finer resolution, but more faults
    - ex: 200K process (1/2 used), 1 fault / 200k, 100K faults / 1 byte
- Historical trend towards larger page sizes
  - CPU, mem faster proportionally than disks



## Program Structure

- consider:

```
int A[1024][1024];
for (j=0; j<1024; j++)
  for (i=0; i<1024; i++)
    A[i][j] = 0;
```
- suppose:
  - process has 1 frame
  - 1 row per page
  - => 1024x1024 page faults!



## Program Structure

- ```
int A[1024][1024];
for (i=0; i<1024; i++)
  for (j=0; j<1024; j++)
    A[i][j] = 0;
```
- 1024 page faults
  - Stack vs. Hash table
  - Compiler
    - separate code from data
    - keep routines that call each other together
  - LISP (pointers) vs. Pascal (no-pointers)



## Priority Processes

- Consider
  - low priority process faults,
    - + bring page in
  - low priority process in ready queue for awhile, waiting while high priority process runs
  - high priority process faults
    - + low priority page clean, not used in a while
    - => perfect!
- Lock-bit (like for I/O) until used once



## Real-Time Processes

- Real-time
  - bounds on delay
  - hard-real time: systems crash, lives lost
    - + air-traffic control, factor automation
  - soft-real time: application sucks
    - + audio, video
- Paging adds unexpected delays
  - don't do it
  - lock bits for real-time processes



## Virtual Memory and WinNT/2000

- Page Replacement Algorithm
  - FIFO
  - Missing page, plus adjacent pages
- Working set
  - default is 30
  - take *victim* frame periodically
  - if no fault, reduce set size by 1
- Reserve pool
  - hard page faults
  - soft page faults



## Virtual Memory and WinNT/2000

- Shared pages
  - level of indirection for easier updates
  - same virtual entry
- Page File
  - stores only modified logical pages
  - code and memory mapped files on disk already



## Virtual Memory and Linux

- Regions of virtual memory
  - paging disk (normal)
  - file (text segment, memory mapped file)
- Re-Examine fork() and exec()
  - exec() creates new page table
  - fork() copies page table
    - + reference to common pages
    - + if written, then copied



## Virtual Memory and Linux

- Page Replacement Algorithm
  - look in reserve pool for free frames
  - reserves for block devices (disk cache)
  - reserves for shared memory
  - user-space blocks
  - enhanced second chance (with more bits)
    - + “dirty” pages not taken first



## Application Performance Studies and Demand Paging in Windows NT

Mikhail Mikhailov

Ganga Kannan

Mark Claypool

David Finkel

*WPI*

Saqib Syed

Divya Prakash

Sujit Kumar

*BMC Software, Inc.*

## Capacity Planning Then and Now

- Capacity Planning in the good old days
  - used to be just mainframes
  - simple CPU-load based queuing theory
  - Unix
- Capacity Planning today
  - distributed systems
  - networks of workstations
  - Windows NT
  - MS Exchange, Lotus Notes



## Experiment Design

Does NT have more hard page faults or soft page faults?

- **System**
  - Pentium 133 MHz
  - NT Server 4.0
  - 64 MB RAM
  - IDE NTFS
  - NT v 4.0
- Experiments
  - Page Faults
  - Caching
- Analysis
  - perfmon

• clearmem

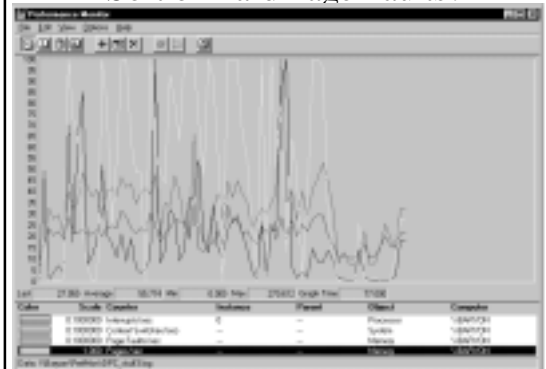


## Page Fault Method

- “Work hard”
- Run lots of applications, open and close
- All local access, not over network



## Soft or Hard Page Faults?



## Caching and Prefetching

- Start process  
– wait for “Enter”
- Start perfmon
- Hit “Enter”
- Read 1 4-K page
- Exit
- Repeat



## Page Metrics with Caching On

