

Postmortem

# League of Legends Analytics

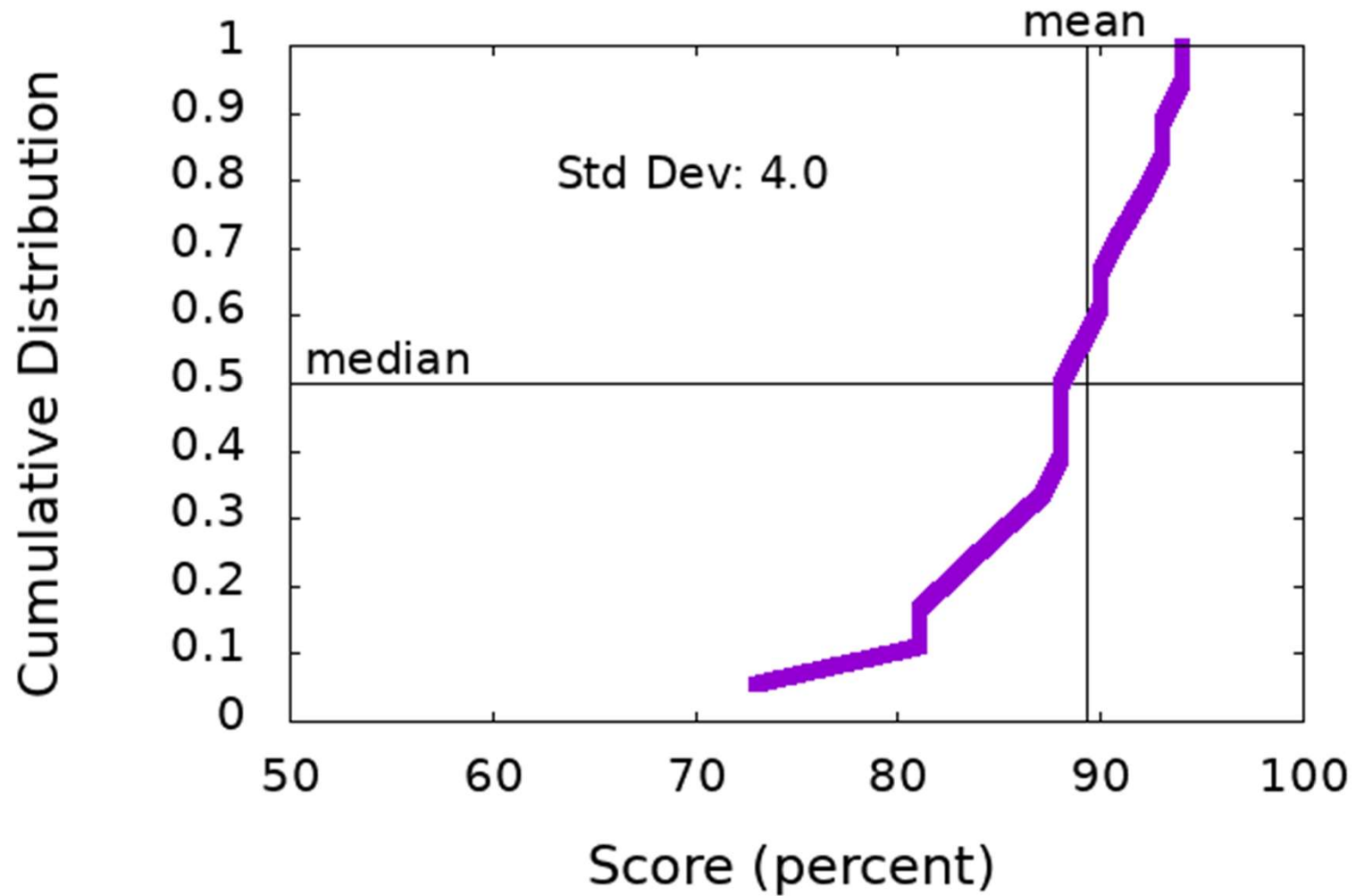


Project 1

IMGD 2905

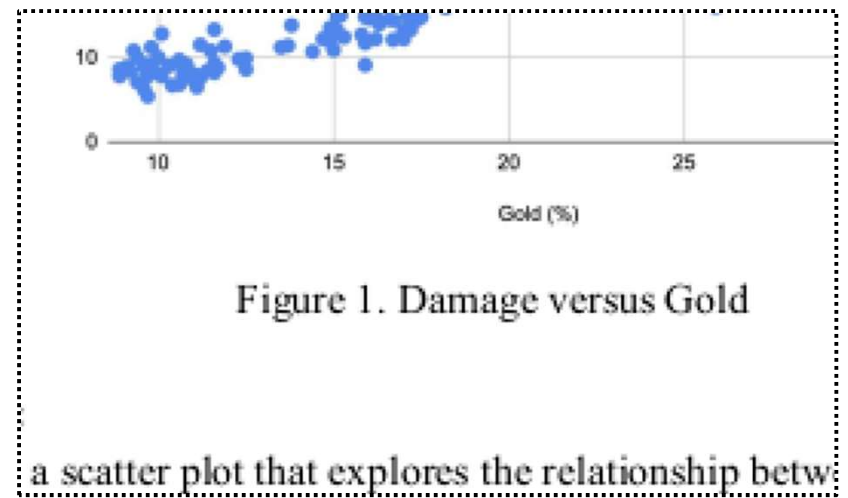
# Scores

## Project 1



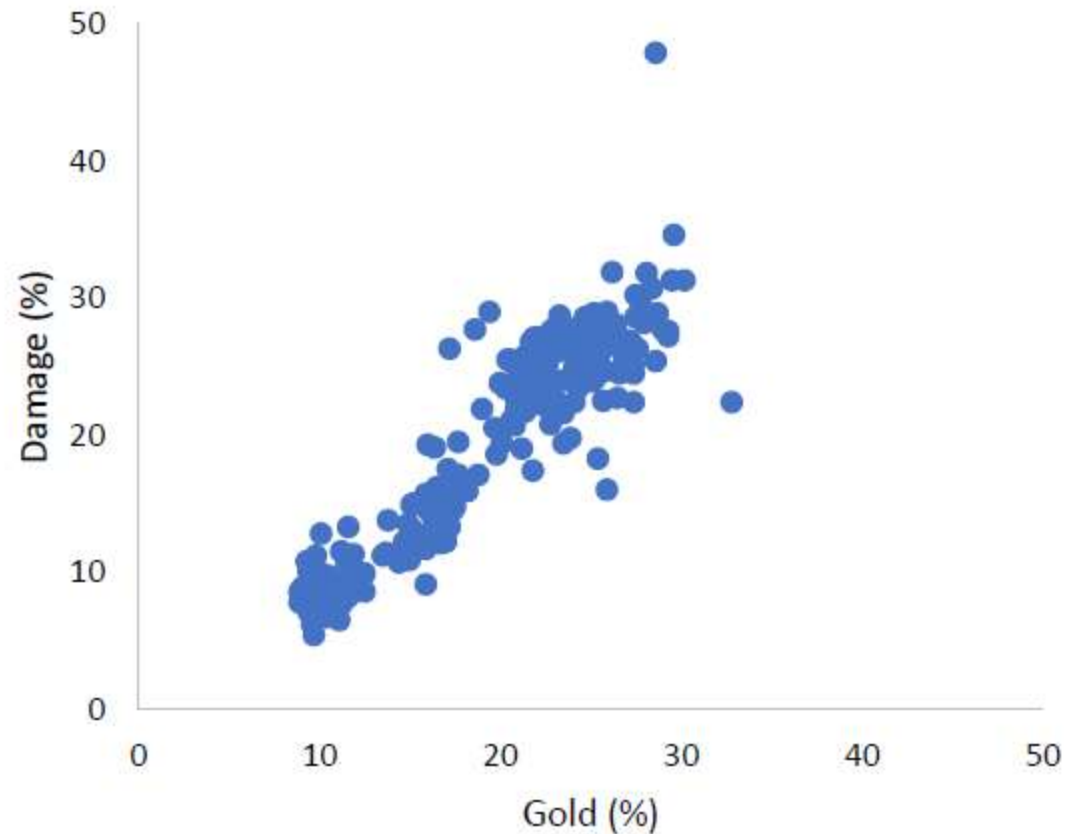
# General Comments

- Structure – Headings per section, Title
- Avoid “you”
- Spell out contractions
- All figures need numbers and captions (no title)
  - “Figure 1. Damage versus Gold”
- Refer to figure by number
  - “Figure 1 shows the relationship between...”
- Describe axes and data BEFORE messages
- Make figure fonts similar size to text font



# Part 1 – Damage versus Gold

- Y-axis versus X-axis
- Dependent versus Independent
- Damage versus Gold
- NOT Gold versus Damage



# Part 2 – Kills and Assists by Role

- Direct label of columns
- Table inline
- Watch Table spacing

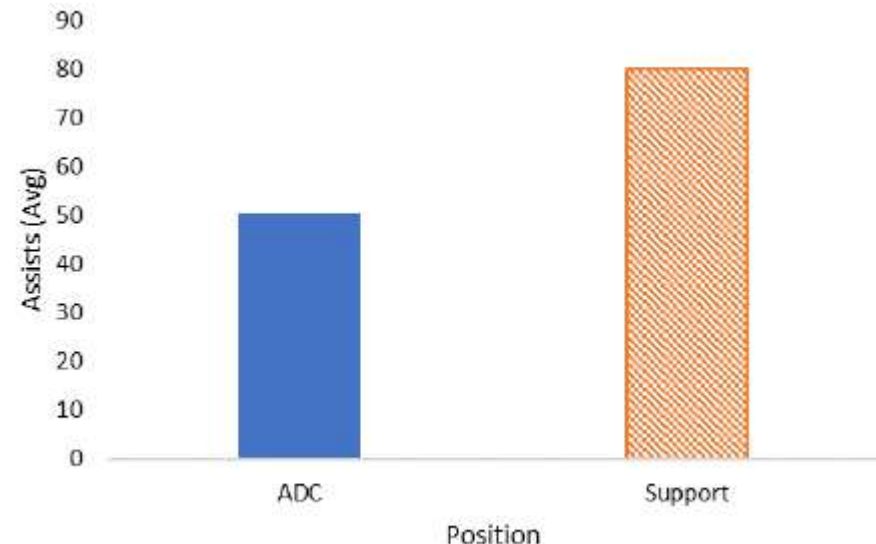


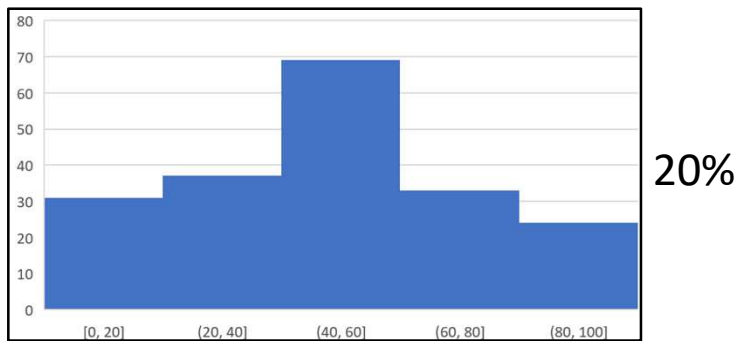
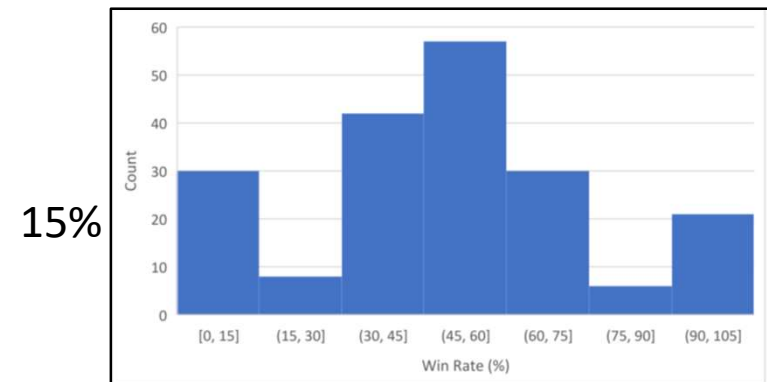
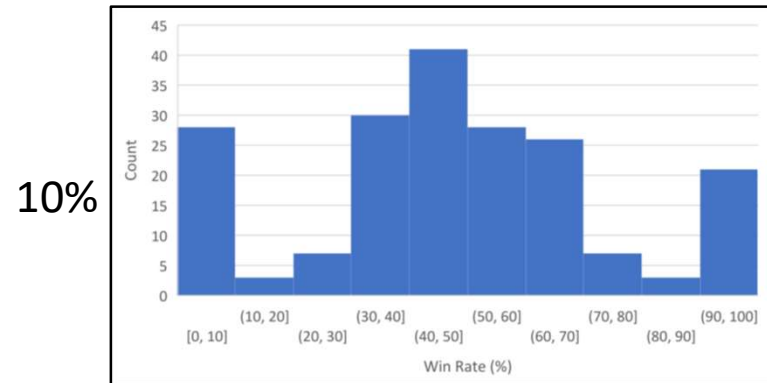
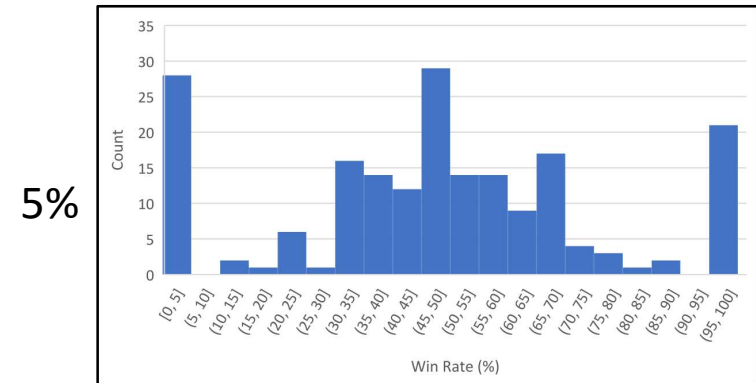
Figure 3. Average Assists per Position

Table 1. Average Kills and Assist by Role

	Kills	Assists
ADC	40.3	50.3
Support	9.7	80
Total	27.9	60.3

# Part 3 – Champion Winrate

- Histogram
- 10% bin size base
- Explain what happens as bin size increase/decrease
- What about ends?
  - Infrequently played!



# Part 4 – Your Choice

- Death rate by role (versus Kills)
- Blue versus Red by Champion
- Distribution of Champions played
- CS by team
- Deaths XP
- Damage versus Gold by Role
- Wins versus Deaths
- Wards cleared by Role



<https://static1.squarespace.com/static/5947dbd14f14bc4eadcd0267/t/5a0d98c6ec212d61eecd0878/1510840528600/TOEFL+Question+analysis>

# Next Steps

- Read over comments on your report
  - Ask if you have questions
- Incorporate **general** and **specific tips** into next project!
  - Re-review before turning in Project 2

